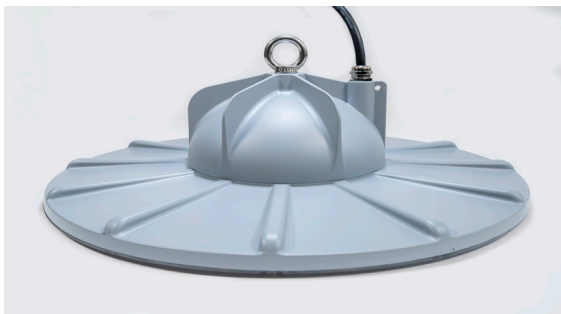


# NOVA LT LED HIGH BAY

The Nova LT High Bay Luminaire is designed for the harsh environments found in heavy industrial manufacturing, cold storage, warehouse and distribution facilities. It is IP66 waterproof and dust-proof rated. The fixture can operate in extreme temperature ranges. This fixture is ideal for new construction and to retrofit existing linear fluorescent and HID high bay fixtures.

## FEATURES

- IP66 Dust-Tight and Waterproof Rated
- NSF Splash Zone Listed
- Ambient Temperature Range -40°F to 131°F (-40°C to 55°C)
- Lumen Efficacy of 160 Lumens/Watt
- Standard 4 kV Surge Supression
- 5-Year Warranty (Optional 7-Year)
- Optional Battery Backup
- Optional Motion Sensor
- Multiple Mounting Options



ELECTRICAL	
Operating Voltage	120-277V
Input Frequency	50/60Hz
Input Wattage	100W, 150W
Surge Protection	4 kV
Dimming	0-10V
PERFORMANCE	
Lifespan	L90 > 54,000 Hours
Ambient Temperature	-40°F to 131°F (-40°C to 55°C)
Warranty	5 Year (7 Year Optional)
Efficacy	Up to 160 LPW
Power Washing	Up to 1600 PSI
CONSTRUCTION	
Weight	15.5 lbs. (7 kg)
Dimensions	10"(H) x 17.9"(W)
Housing	Seamless Aluminum Alloy
Finish	Organic Power Coating, Epoxy Resin
Power Whip	6 ft. 5-Connector (Power & Dimming)
OPTICAL INFORMATION	
CRI	≥80 (90 Optional)
CCT	4000K, 5000K
Beam Angle/Lens	90° Clear, Medium Lens

## EMERGENCY BATTERY BACKUP OPTION

- Minimum 90-Minute Duration
- 16W 2500 Lumen
- Temperature Range from 10°C to 50°C (Not Standard 55°C)



Information provided is subject to change. Please verify all details with FintronX. All values are designed to standard industry values when measured under laboratory conditions, and FintronX makes no warranty or guarantee, expressed or implied, that such performance will be obtained under end-use conditions.

# NOVA LT LED HIGH BAY

## TECHNICAL PARAMETERS

Series	Watt	Lumens	Amps 120V	Amps 277V	Weight	Dimensions
NOVA LT	100W	16,000	1.00	0.35	15.5 lbs.	10"(H) x 17.9"(W)
	150W	24,000	1.45	0.55	15.5 lbs.	10"(H) x 17.9"(W)

## ORDERING OPTIONS

Series	Wattage	Voltage	Kelvin	Mounting	Version
<b>NOV</b>		<b>UNV</b>	<b>50K</b>	<b>HR</b>	<b>LT</b>
<b>NOV</b>	<b>100W</b> 100W <b>150W</b> 150W	<b>UNV</b> 120-277V*	<b>40K</b> 4000K <b>50K</b> 5000K*	<b>HR</b> M10 Hang Ring* <b>HK</b> Hook Mount <b>P3</b> Center Pendant	<b>LT</b>

## OPTIONAL ADD-ONS

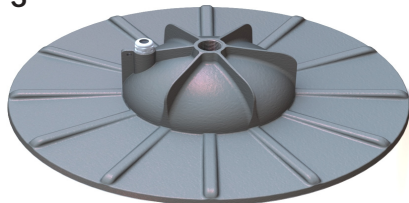
Plug Adapter		Sensor		CRI		Warranty		Emergency Battery Backup	
<b>Blank</b> <b>R3</b>	None* Mini-Receptacle 3-Wire, Male	<b>Blank</b> <b>MS</b>	None* Motion Sensor	<b>Blank</b> <b>C</b>	≥80 CRI* 90 CRI	<b>Blank</b>	5 Years*	<b>Blank</b> <b>EM</b>	None* Emergency Battery Backup

\*Standard

<sup>1</sup>Not Pictured; Contact Us for Details

## Mounting and EM Options:

**P3**



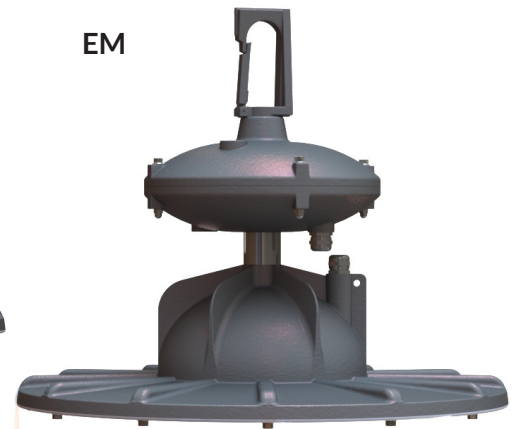
**HK**



**HR**



**EM**



Information provided is subject to change. Please verify all details with FintronX. All values are designed to standard industry values when measured under laboratory conditions, and FintronX makes no warranty or guarantee, expressed or implied, that such performance will be obtained under end-use conditions.